



**SILKWORM SEED PRODUCTION CENTRE
NATIONAL SILKWORM SEED ORGANIZATION
Central Silk Board, Ministry of Textiles : Govt. of India**

B.T.M. Layout, Hosur Road,
Dollars Scheme, Madiwala
BANGALORE – 560 068
Ph. 080-26688957/26687948
Email : sspcbn.csb@nic.in



No.CSB/ NSSO/ SSPC/ BNG/ STORES/ 2022-23/

Date : 07-09-2022

NOTICE INVITING TENDER

Sub : Inviting bids for supply, installation and commissioning of CCTV system in the premises of SSPC, Bangalore - reg.

~~~~~

Silkworm Seed Production Centre (SSPC), Bangalore is a unit under NSSO, Central Silk Board, Govt. of India involved in production of quality silkworm seed for the supply to the farmers. The office is interested in installing CCTV system for ensuring security to the property in the campus. Accordingly, sealed bids (two bid system) are invited from the firms who are involved in installation and maintenance of CCTV systems. Interested parties may visit the location for inspection of the site and quote their lowest rate and submit the same to this office before the stipulated date and time. The Terms & Conditions of the tender, specification of the items and a representative diagram showing the outline of the building at SSPC, Bangalore campus are attached at Annexure-I.

The Technical bid and the Financial bid should be sealed by the bidder in separate covers appropriately superscribed as "Technical Bid" and "Financial Bid" as the case may be. The sealed covers containing the Technical bid and the Financial bid are to be placed in bigger cover which should also be sealed and addressed to the Scientist-D, Silkworm Seed Production Centre, National Silkworm Seed Organization, Dollars Scheme, B.T.M. Layout, Hosur Road, Madiwala, Bangalore-560068 superscribed as "**Tender for installation of CCTV system**".

The last date for submission of the sealed tenders is **07-10-2022** upto **02:00 PM** and the same will be **opened on the same day at 03:30 PM** in this office in the presence of the tenderers or their authorized representatives who desire to be present.

The undersigned reserves the right to accept or reject any or all the quotations without assigning any reason thereof. In case of any dispute, the decision of the Director, NSSO Bangalore shall be final and binding on all the bidders.

  
SCIENTIST - D.

**Terms & Conditions :**

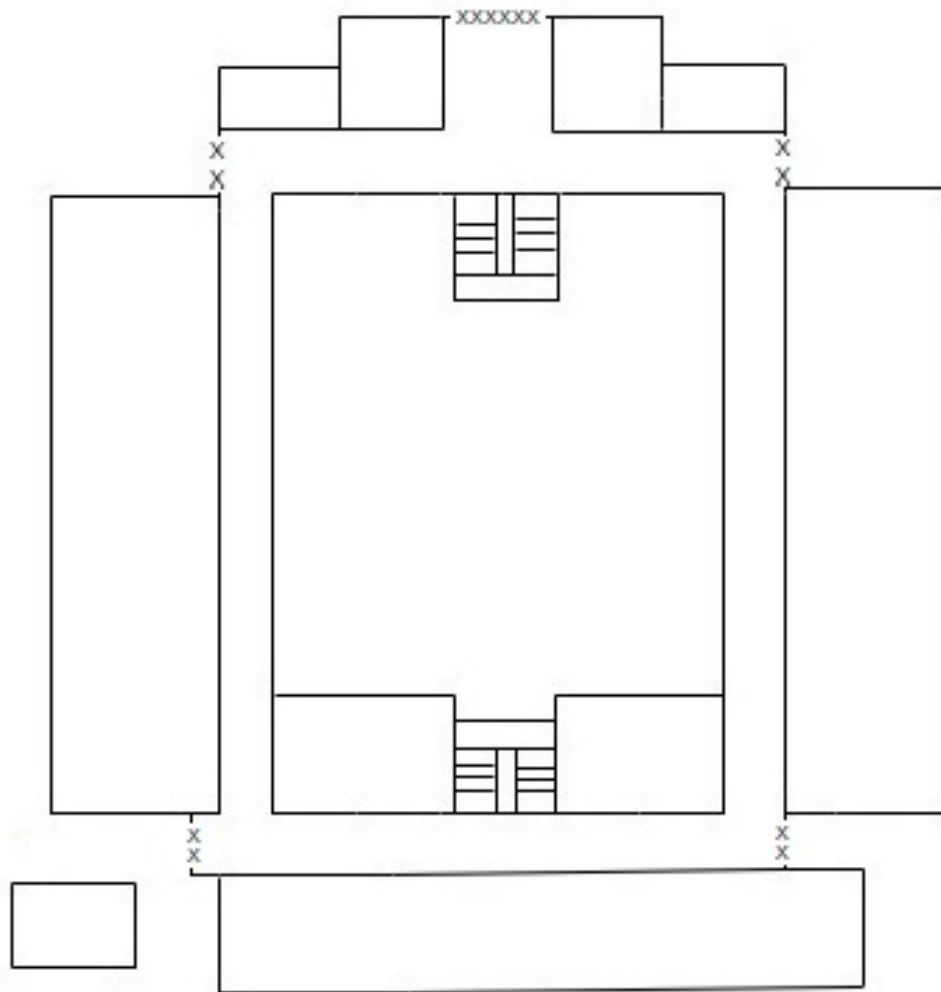
1. The sealed Technical Bid should contain the following :
  - Copies of work order and credential certificates from customers for having executed the supply, installation and commissioning CCTV systems.
  - Copies of PAN card of the firm, GST registration certificate; Income Tax returns for consecutive 3 years.
  - Make and model of the product offered should be mentioned and conformance to the specification to be indicated. Data sheet of the item should be included.
  - The positions of cameras to be installed may be indicated in the outline diagram.
2. The Financial Bid shall contain the rates for each item / component of CCTV system which are mentioned in the Technical Bid. Installation and commissioning charges are to be indicated separately. The applicable GST amount should be indicated separately.
3. All the pages of the bids should be signed with the seal of the vendor.
4. Additional items required may be added in the Technical bid and the price for that may be mentioned in the Financial bid.
5. The items should be under warranty of at least one year. During the warranty period, the supplier shall be responsible for proper functioning of the items. The firm shall check the proper functioning of the whole system once in every three months, apart from any call made for rectification of malfunctioning.
6. After satisfactory installation and commissioning, the operation of the system has to be demonstrated and explained to the purchaser.
7. The price quoted should be F.O.R. to SSPC, Bangalore.
8. The envelope shall indicate the name and address of the party to enable the quotation to be returned unopened in case it is declared "Late". Quotations received after the due date and time shall be summarily rejected.
9. In the event of the specified date for opening of quotations being declared as holiday for the purchaser, the quotations will be opened on the next working day at the stipulated time.
10. The quotation should be valid for a period of 120 days from the date of opening of the same.
11. The firm who is awarded the contract shall complete the work within 15 days.
12. Payment will be released after satisfactory completion of the work.
13. For further details, if required, this office may be contacted between 10:00 AM to 04:00 PM on working days from Monday to Saturday.

## Specification of the items / components of CCTV system

| Sl. | Item                                | Specification                                                                                                                                                                                                                                                                                                                                      | Qty         |
|-----|-------------------------------------|----------------------------------------------------------------------------------------------------------------------------------------------------------------------------------------------------------------------------------------------------------------------------------------------------------------------------------------------------|-------------|
| 1   | IP Camera                           | •4MP resolution •IR Range of 20 Mtrs or higher<br>•PoE •Color-Nightvision •H.265+ / H.265 dual-stream encoding •Support ONVIF, able to connect with other company's NVR •Built-in Mic                                                                                                                                                              | 10 – 12 nos |
| 2   | Network Video Recorder (16 Channel) | • <b>16 Channel</b> IP Camera Input •Compression and decoding : <b>H.265+/H.265/ H.264+/H.264</b><br>•160Mbps incoming bandwidth •HDMI &VGA interfaces : both interfaces support independent video output - HDMI : 4K (3840×2160) & VGA : 1920×1080 •Support Multi-brand network cameras, ONVIF conformance •SATA interface for HDD •USB interface | 1 no        |
| 3   | POE switch (16 port)                | •16 x 10/100Mbps RJ-45 PoE ports & 2GE uplink ports • Supply power to surveillance cameras (16 POE Cameras) over Cat-6 cabling *Support the IEEE 802.3af/at PoE protocol.                                                                                                                                                                          | 1 no        |
| 4   | Display unit (24 inch)              | 1920x1080 pixels ; Full HD ; IPS panel ; HDMI & VGA ports                                                                                                                                                                                                                                                                                          | 1 no        |
| 5   | <b>Rack with accessories</b>        | Power Sockets & switch with cable ; shelf ; rack cable manager; Colling fan [4U rack or better]                                                                                                                                                                                                                                                    | 1 no        |
| 6   | Hard Disk                           | Surveillance HDD (Internal) - 8TB SATA 6 Gb/s, 256 MB cache                                                                                                                                                                                                                                                                                        | 1 no        |
| 7   | CAT-6 cable                         | Conductor diameter 0.57 mm (23 AWG)                                                                                                                                                                                                                                                                                                                |             |

Note : Additional items required for the setup may be added by the vendor and given in the Technical bid.

Diagram showing the outline of the building at SSPC, Bangalore



The position of entry gates in the Ground Floor are marked with the symbol "XX".

## Technical Bid

Format for indicating the items offered by the vendor

| Sl. No. | Items and Specification as per NIT                                                                                                                                                                                                                                                                                                                                                             | Make & Model Offered with specification | Remarks |
|---------|------------------------------------------------------------------------------------------------------------------------------------------------------------------------------------------------------------------------------------------------------------------------------------------------------------------------------------------------------------------------------------------------|-----------------------------------------|---------|
| 1       | <b>IP Camera</b><br>•4MP resolution •IR Range of 20 Mtrs or higher •PoE •Color-Nightvision<br>•H.265+ / H.265 dual-stream encoding<br>•Support ONVIF, able to connect with other company's NVR •Built-in Mic                                                                                                                                                                                   |                                         |         |
| 2       | <b>Network Video Recorder (16 Channel)</b><br>•16 Channel IP Camera Input<br>•Compression and decoding :<br><b>H.265+/H.265/ H.264+/H.264</b> •160Mbps incoming bandwidth •HDMI &VGA interfaces : both interfaces support independent video output - HDMI : 4K (3840×2160) & VGA : 1920×1080<br>•Support Multi-brand network cameras, ONVIF conformance •SATA interface for HDD •USB interface |                                         |         |
| 3       | <b>POE switch (16 port)</b><br>•16 x 10/100Mbps RJ-45 PoE ports & 2GE uplink ports • Supply power to surveillance cameras (16 POE Cameras) over Cat-6 cabling *Support the IEEE 802.3af/at PoE protocol.                                                                                                                                                                                       |                                         |         |
| 4       | <b>Display unit (24 inch)</b><br>1920x1080 pixels ; Full HD ; IPS panel ; HDMI & VGA ports                                                                                                                                                                                                                                                                                                     |                                         |         |
| 5       | <b>Rack with accessories</b><br>Power Sockets & switch with cable ; shelf ; rack cable manager; Colling fan [4U rack or better]                                                                                                                                                                                                                                                                |                                         |         |
| 6       | <b>Hard Disk</b><br>Surveillance HDD (Internal) - 8TB SATA 6 Gb/s, 256 MB cache                                                                                                                                                                                                                                                                                                                |                                         |         |
| 7       | <b>CAT-6 cable</b><br>Conductor diameter 0.57 mm (23 AWG)                                                                                                                                                                                                                                                                                                                                      |                                         |         |

Note :

1. Reasons for deviation from required specification may be stated in the Remarks.
2. Additional items required for the setup may be added by the vendor.

## Format for quoting rate for the items in the Financial Bid

| Sl. No. | Description                                | Make & Model | Qty | UOM | Rate (INR) | Amount (INR) |
|---------|--------------------------------------------|--------------|-----|-----|------------|--------------|
|         | <i>Materials</i>                           |              |     |     |            |              |
| 1       | IP Camera                                  |              |     |     |            |              |
| 2       | Network Video Recorder (16 Channel)        |              |     |     |            |              |
| 3       | POE switch (16 port)                       |              |     |     |            |              |
| 4       | Display unit (24 inch)                     |              |     |     |            |              |
| 5       | Rack with accessories                      |              |     |     |            |              |
| 6       | Hard Disk                                  |              |     |     |            |              |
| 7       | CAT-6 cable                                |              |     |     |            |              |
|         | @ Additional items may be added            |              |     |     |            |              |
|         |                                            |              |     |     |            |              |
|         |                                            |              |     |     |            |              |
|         | <i>Charges</i>                             |              |     |     |            |              |
| A       | Laying of CAT-6 cable with conduits        |              |     |     |            |              |
| B       | Installation and configuration charges for |              |     |     |            |              |
|         | a)                                         |              |     |     |            |              |
|         | b)                                         |              |     |     |            |              |
|         |                                            |              |     |     |            |              |

GST charge @ \_\_ % on item Nos. \_\_\_\_\_